

October 2019



P.O. Box 238
1 Main Street N
Kimball, MN 55353

Phone: (320) 398-2725

Fax: (320) 398-2720

E-mail:

Clerk: nicole.pilarski@ci.kimball.mn.us

Deputy Clerk: trista.kramer@ci.kimball.mn.us

City Hall Hours

- Monday 8:00am to 4:30pm
- Tuesday 8:00am to 6:00pm
- Wednesday: 8:00am to 1:00pm
- Thursday: 8:00am to 5:00pm
- Friday 8:00am to 4:30pm

Upcoming Council Meetings

October 1

October 14

November 5

November 19

December 3

December 17

October Recycling Weeks:

October 8

October 22

Just a friendly reminder...Utility bills are due the 28th of each month. NO PAYMENTS, NO SERVICE!



Fire Prevention Week

October 6 - 12, 2019

**“Not every hero wears a cape.
PLAN and PRACTICE your ESCAPE!”**

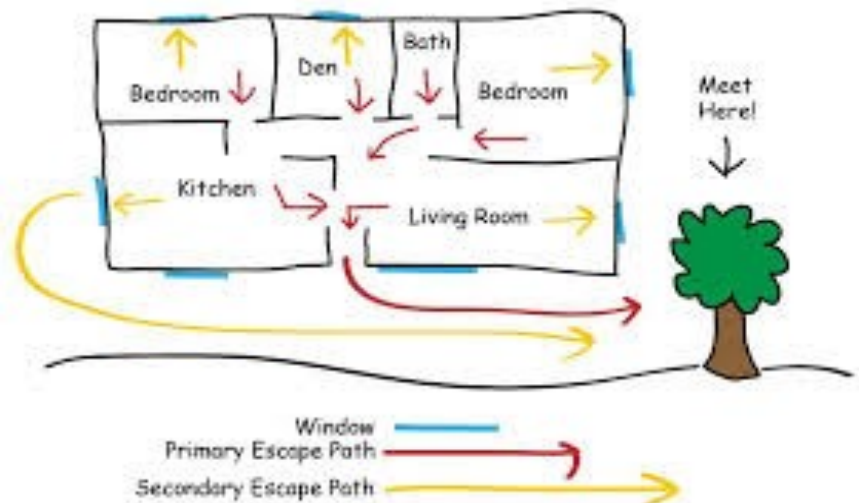
Did you know? In a typical home fire, you can have as little as one to two minutes to escape safely from the time the smoke alarm sounds. **Escape planning and practice can help you make the most of the time you have**, giving everyone enough time to get out. Plan ahead for your escape. Make your home escape plan and practice today.

Be a Hero...**How do you define a hero?** Is it...a person who is courageous and performs good deeds? Someone who comes to the aid of others, even at personal risk? **A hero can be all of those things. A hero can also be...someone who takes small, but important actions to keep themselves and those around them safe from a fire.** When it comes to fire safety, maybe you're already a hero in your household or community. If not, maybe you're feeling inspired to become one. It's easy to take the first step - make your home escape plan!



How to make a Home Fire Escape Plan

- Draw a map of your home. Show all doors and windows.
- Visit each room. Find two ways out.
- All windows and doors should open easily. You should be able to use them to get outside.
- Make sure your home has smoke alarms. Push the test button to make sure each alarm is working.
- Pick a meeting place outside. It should be in front of your home. Everyone will meet at the meeting place.
- Make sure your house or building number can be seen from the street.
- Talk about your plan with everyone in your home.
- Practice your home fire drill!



MnDOT asks motorists, farm equipment operators to safely share the road during harvest season.

Motorists traveling on Minnesota highways this fall need to be aware of large farm equipment transporting crops to markets, grain elevators and processing plants, according to the Minnesota Department of Transportation.

As harvest season begins across the state and farmers and their equipment are out on the highways, motorists need to be prepared to encounter slow-moving farm vehicles, especially on rural, two-lane roads.

Farm equipment is large and heavy, making it hard for operators to accelerate, slow down and stop. The equipment also makes wide turns and sometimes crosses over the center line. In addition, farm vehicles can create large blind spots, making it difficult for operators to see approaching vehicles. All of these factors can cause serious crashes.

Motorists should:

- ⇒ Pay attention at all times when driving.
- ⇒ Watch for debris dropped by trucks hauling crops. It is safer to brake or slowly drive through debris than to veer into oncoming cars or off the road.
- ⇒ When approaching farm equipment, slow down and use caution. Put additional space between your vehicle and the farm equipment ahead. Don't assume the equipment operator can see you.
- ⇒ Be patient and wait for a safe place to pass.
- ⇒ Wear seatbelts.
- ⇒ Drive with headlights on at all times.

Farm equipment operators should:

- ⇒ Use lights and flashers to make equipment more visible.
- ⇒ Use slow-moving vehicle emblems on equipment traveling less than 30 mph.
- ⇒ Drive slow-moving vehicles in the right-hand lane as close to the edge of the roadway as possible.
- ⇒ Consider using an escort vehicle when moving equipment, especially at night and if the equipment is large enough that it may extend across the center line.
- ⇒ Avoid encouraging or signaling motorists to pass. Pull over when safe, and let traffic pass.
- ⇒ Pick up any debris left on the highway by the equipment or contact MnDOT to remove it.
- ⇒ Plan their routes so wide equipment will not hit or damage signs, guardrails, light poles and other roadway structures.

Brush & Compost Pick-up

Rules to follow:

- Brush not to exceed 4 feet in length & must be bundle and tied.
- Compost - not to exceed 50 lbs. **ONLY** corn-based self-composting bags will be picked up. Compostable bags are distinct from regular plastic bags because they are usually clear or a green-tinted opaque color. Most home improvement, grocery and hardware stores now carry them. If you don't see them, ask an employee at the store.

Biodegradable bags and regular bags are **NOT** accepted and **WILL NOT** be picked up!

COMPOSTABLE BAGS ONLY!

- All brush and compost must be placed to the curb by 6:30 am.
- Residents also have the option of bringing brush and compost to the City's compost site on their own, by appointment only.

Please contact the Public Works Departments for additional information or for an appointment at (320) 980-4906.

Last Brush & Compost pick up day is October 29th...weather permitting.

****Attention City of Kimball Residents****

The City of Kimball is asking residents to please locate where your curb stop is before the snow falls to make it easier to find should your water service freeze. To the right is what a curb stop looks like. If it is in your lawn, mark it with a flag. If it is in your driveway or sidewalk, mark it with spray paint.



Halloween Safety Checklist

Review these rules to keep you safe.

- ◇ Stay on the sidewalk.
- ◇ Don't eat any candy before it is inspected by adults.
- ◇ Don't eat any unwrapped candies.
- ◇ Stay with your group.
- ◇ Wear a reflecting item on your clothing so cars can see you
- ◇ Observe the trick or treating hours
- ◇ Have a hauntingly good time!



Winter Parking Reminder

No person shall park a vehicle upon any street in the City between the hours of 10:00 p.m. and 6:00 a.m., on any date that falls between 12:01 a.m. November 1st and 11:59 p.m. April 30th of the following year. The City of Kimball may, in its sole discretion, tow any vehicle parked in violation of this section to an impound lot. The cost of the tow and impound fee shall be paid by the owner of the vehicle prior to the vehicle being released from impound.