



June 2025



P.O. Box 238
1 Main Street N
Kimball, MN 55353
Phone: (320) 398-2725
Fax: (320) 398-2720
E-mail:

City Clerk
nicole.pilarski@ci.kimball.mn.us
Deputy Clerk
allison.hansen@ci.kimball.mn.us

 Follow us on Facebook:
www.facebook.com/kimballmn

Upcoming Regular Council Meetings

****City Council meetings will now be held at City Hall****

June 2nd

July 7th

August 4th

September 8th & 22nd

October 6th & 20th

November 3rd & 17th

December 1st & 15th

June Recycling Days:
3rd & 17th

City Hall will be closed:
Thursday June 19th in
observance of Juneteenth



The City's Consumer Confidence Report is Online

Your drinking water comes from a groundwater source: two wells ranging from 48 to 59 feet deep, that draw water from the Quaternary Water Table aquifer.

Kimball works hard to provide you with safe and reliable drinking water that meets federal and state water quality requirements. The purpose of this report is to provide you with information on your drinking water and how to protect our precious water resources. Contact Travis Peterson – Public Works Lead, at 320-980-4906 or travis.peterson@ci.kimball.mn.us if you have questions about Kimball's drinking water. You can also ask for information about how you can take part in decisions that may affect water quality.

The U.S. Environmental Protection Agency sets safe drinking water standards. These standards limit the amounts of specific contaminants allowed in drinking water. This ensures that tap water is safe to drink for most people. The U.S. Food and Drug Administration regulates the amount of certain contaminants in bottled water. Bottled water must provide the same public health protection as public tap water.

Drinking water, including bottled water, may reasonably be expected to contain at least small amounts of some contaminants. The presence of contaminants does not necessarily indicate that water poses a health risk. More information about contaminants and potential health effects can be obtained by calling the Environmental Protection Agency's Safe Drinking Water Hotline at 1-800-426-4791.

This report contains our monitoring results from January 1 to December 31, 2024. We work with the Minnesota Department of Health to test drinking water for more than 100 contaminants. It is not unusual to detect contaminants in small amounts. No water supply is ever completely free of contaminants. Drinking water standards protect Minnesotans from substances that may be harmful to their health.

Learn more by visiting the Minnesota Department of Health's webpage [Basics of Monitoring and testing of Drinking Water in Minnesota \(https://www.health.state.mn.us/communities/environment/water/factsheet/sampling.html\)](https://www.health.state.mn.us/communities/environment/water/factsheet/sampling.html).

Groundwater supplies 75 percent of Minnesota's drinking water, and found in aquifers beneath the surface of the land. Surface water supplies 25 percent of Minnesota's drinking water, and is the water in lakes, rivers, and streams above the surface of the land.

The Minnesota Department of Health provides information about your drinking water source(s) in a source water assessment, including:

- How Kimball is protecting your drinking water source(s);
- Nearby threats to your drinking water sources;

How easily water and pollution can move from the surface of the land into drinking water sources, based on natural geology and the way wells are constructed.

Find your source water assessment at [Source Water Assessments \(https://www.health.state.mn.us/communities/environment/water/swp/swa\)](https://www.health.state.mn.us/communities/environment/water/swp/swa) or call 651-201-4700 between 8:00 a.m. and 4:30 p.m., Monday through Friday.

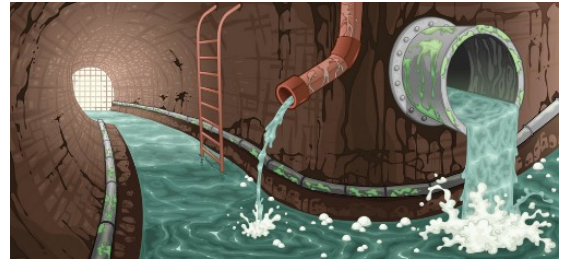
You may view this entire report at <http://www.ci.kimball.mn.us/ccr>

Print copies of the report can also be requested by contacting City Hall.

REMINDER—City Ordinance states that no person shall drain their sump pumps into any drains that flow into the City water services of any kind. Please see the ordinance below as a reminder.

Section 805.04: **USE OF THE PUBLIC SEWERS.**

Subd. 1. Sanitary Sewer Restrictions. No person shall discharge non-sewage waters to any sanitary sewer, nor connect any sources of non-sewage waters to any public sanitary sewer, whether directly or indirectly. This prohibition shall include specifically, but not exclusively, roof, down spouts, exterior foundation drains, areaway drains, basement tiles, sump pumps, air conditioner or dehumidifier discharges, groundwater, roof runoff, subsurface drainage, uncontaminated cooling water, storm water, surface water, unpolluted industrial process, and all other non-sewage waters. Sump pumps shall not discharge into the sanitary sewer; instead, sump pumps shall be hard plumbed to discharge outdoors or into the storm sewers.



With spring/summer upon us, we want to send a friendly reminder about the City of Kimball’s watering restriction that were put into effect.

Guidelines to follow:

Lawn watering and irrigation of athletic fields will be limited to all properties based on address numbers. Addresses ending in an odd number can water lawns on Tuesday and addresses ending in an even number can water lawns on Wednesday.

This action was taken to reduce peak water usage in areas served by the City’s system.

- ◆ Additionally, because of how much water is lost to evaporation, watering is only permitted between 4 a.m. and 8 a.m.
- ◆ Watering of newly sodded or seeded yards is exempt from the odd and even day restriction for two weeks.
- ◆ Activities such as car washing, water toys and filling small kiddie swimming pools are exempt.
- ◆ Hand watering of newly planted trees, flowerpots, baskets, and vegetable gardens is permitted at any time.
- ◆ Any sprinkler system not served by the City’s system is exempt.

These restrictions will be in effect until further notice.

PLEASE do your part in conserving water: look for leaks, consider an upgrade to WaterSense labeled products, take a sprinkler break and reuse water.



NATIONAL DOUGHNUT DAY
First Friday In June

